

NEWSLETTER

JANUARY 2024



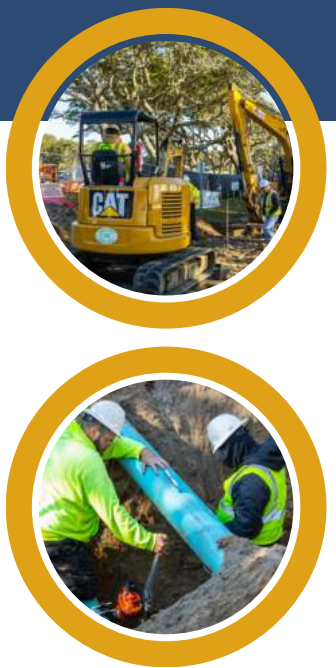
HAPPY NEW YEAR 2024!

Entering the new year with a commitment to excellence in every project. Wishing you a prosperous and successful New Year from Civil Works Contracting!



FORT FISHER - VISITOR CENTER PROJECT HIGHLIGHT

Kicking off the New Year with achievements at the Fort Fisher State Historic Site. This project encompasses a wide range of tasks, including Erosion Control, Clearing, Grading, Pavement, Sidewalks, Utilities, Fencing, and more. We are in the process of completing site work for the Underwater Archaeology Building with tasks such as curb and gutter installation, asphalt preparation, and topsoil placement for sod installation. We've also achieved major milestones like paving, grading, and utility connections. Here's to continued progress and success in the year ahead!



EMPLOYEE OF THE MONTH



OSCAR MATUTE MEZA

Congratulations to

Oscar Matute Meza

on being awarded Employee of the Month. Your consistent punctuality, dedicated work ethic, and exemplary teamwork have earned you this well-deserved recognition. Your contributions greatly benefit our team and organization.

Be sure to Congratulate Oscar when you see him!

W2 SEND OUTS

Civil Works Contracting will be sending out W2s after January 19th. You will be able to access your W2 in your employee portal by visiting our website!



JANUARY SAFETY TIPS!



1. COLD WEATHER PRECAUTIONS:

Dress warmly, take breaks in heated areas, and stay hydrated.

2. SLIPPERY SURFACE MANAGEMENT:

Be mindful of slippery surfaces, use anti-slip measures, and be cautious when operating equipment. **PPE IS ALWAYS REQUIRED!**

3. EQUIPMENT MAINTENANCE:

Maintain machinery, and ensure it's ready for cold weather conditions and documenting in Site Docs.

4. SLIP AND FALL PREVENTION:

Wear slip-resistant footwear, and use anti-slip measures as needed.

5. EMERGENCY PLANNING AND COMMUNICATION:

Update emergency plans, maintain clear communication, and ensure access to first-aid kits are stationed on each job.